

Individual mounting

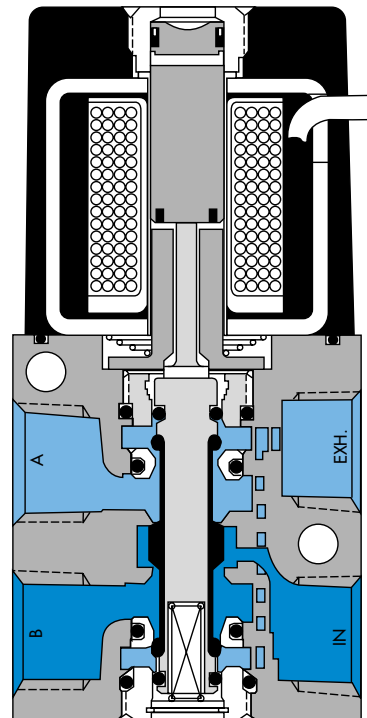
inline	sub-base	
--------	----------	--

Manifold mounting

stacking	sub-base	sub-base with pressure regulators	sub-base with pressure and flow regulators	
----------	----------	-----------------------------------	--	--

Circuit bar mounting

cylinder ports in base	with pressure regulators	"plug-in"	"plug-in" with pressure regulators	"plug-in" with flow regulators	"plug-in" with pressure and flow regulators
------------------------	--------------------------	-----------	------------------------------------	--------------------------------	---



Function	Port size	Flow (Max)	Individual mounting
4/2	M5 - G1/8"	150 NI/min	inline

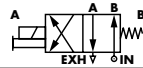

OPERATIONAL BENEFITS

1. Balanced poppet, immune to variations of pressure.
2. Short stroke with high flow.
3. The patented solenoid develops high shifting forces.
4. Powerful return spring.
5. Manual operator standard on all valves.
6. Burn-out proof solenoid on AC service.

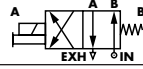
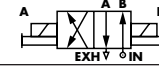


HOW TO ORDER

Reset

Port size	Single operator	Double operator (Minimum DC wattage 5,4W)
		
G1/8"	45A-AC1-Dxxx-xxx	45A-GC1-Dxxx-xxx
M5	45A-AD1-Dxxx-xxx	45A-GD1-Dxxx-xxx

WITH INTEGRATED FLOW REGULATORS

Port size	Single operator	Double operator (Minimum DC wattage 5,4W)
		
G1/8"	45A-AC2-Dxxx-xxx	45A-GC2-Dxxx-xxx
M5	45A-AD2-Dxxx-xxx	45A-GD2-Dxxx-xxx

SOLENOID OPERATOR >

D **XX X- X XX***

XX	Voltage	X	Wire length	X	Manual operator	XX	Electrical connection
AB	220V~/50HZ	A	45 cm (Flying leads)	1	Non-locking	KA	Square connector
AA	110V~/50HZ	J	Connector	2	Locking	KD	Square connector with light
AC	24V~/50HZ					JB	Rectangular connector
FB	24V=/1,8W					JD	Rectangular connector with light
DA	24V=/5,4W					BA	Flying leads
DF	24V=/12,7W						

Function	Port size	Flow (Max)	Individual mounting
4/2	M5 - G1/8"	130 NI/min	sub-base

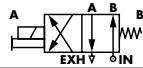

OPERATIONAL BENEFITS

1. Balanced poppet, immune to variations of pressure.
2. Short stroke with high flow.
3. The patented solenoid develops high shifting forces.
4. Powerful return spring.
5. Manual operator standard on all valves.
6. Burn-out proof solenoid on AC service.





HOW TO ORDER

Reset

Port size	Single operator	Double operator (Minimum DC wattage 5,4W)
		
Valve less base	45A-L00-Dxxx-xxx	45A-N00-Dxxx-xxx
G 1/8" base	45A-LCA-Dxxx-xxx	45A-NCA-Dxxx-xxx
M5 base	45A-LDA-Dxxx-xxx	45A-NDA-Dxxx-xxx

WITH INTEGRATED FLOW REGULATORS

Port size	Single operator	Double operator (Minimum DC wattage 5,4W)
		
Valve less base	45A-L00-Dxxx-xxx	45A-N00-Dxxx-xxx
G 1/8" base	45A-LCB-Dxxx-xxx	45A-NCB-Dxxx-xxx
M5 base	45A-LDB-Dxxx-xxx	45A-NDB-Dxxx-xxx

SOLENOID OPERATOR >

D **XX X- X XX***

XX	Voltage	X	Wire length	X	Manual operator	XX	Electrical connection
AB	220V~/50HZ	A	45 cm (Flying leads)	1	Non-locking	KA	Square connector
AA	110V~/50HZ	J	Connector	2	Locking	KD	Square connector with light
AC	24V~/50HZ					BA	Flying leads
FB	24V=/1,8W						
DA	24V=/5,4W						
DF	24V=/12,7W						

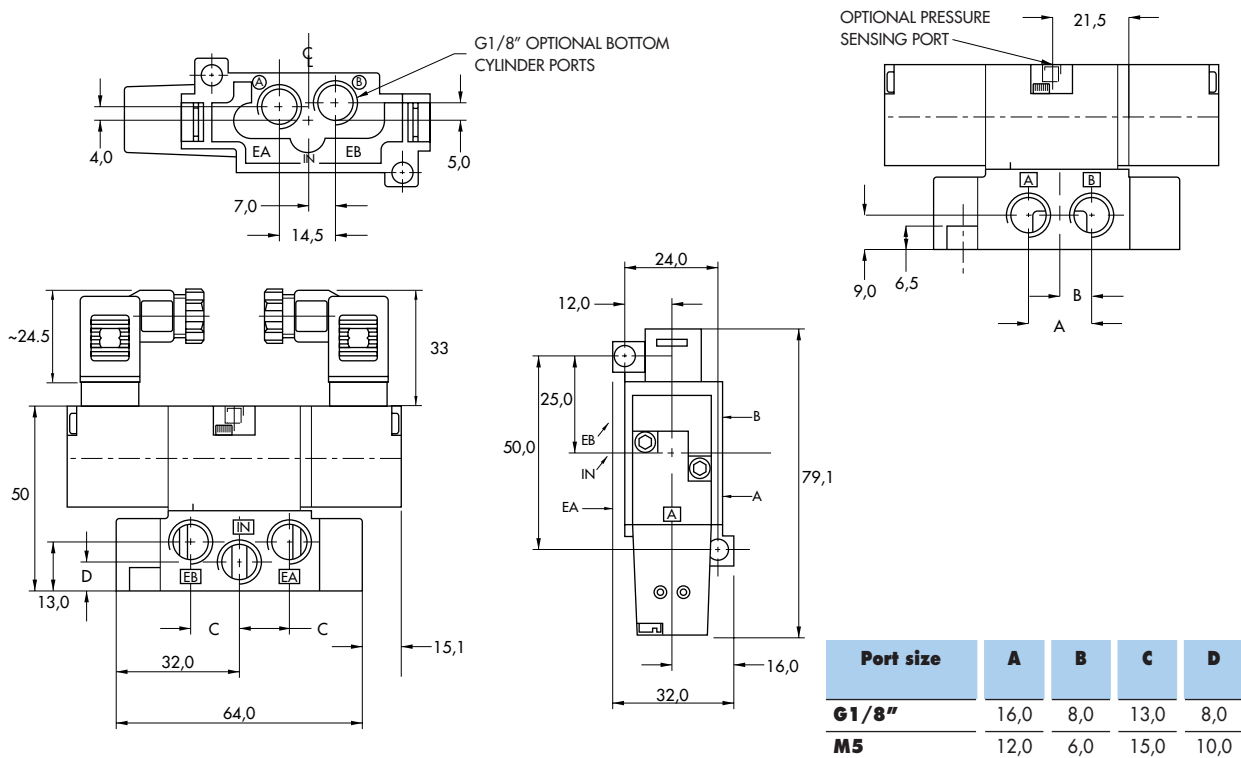
TECHNICAL DATA

Fluid :	Compressed air, vacuum, inert gases		
Pressure range :	Vacuum to 8.5 bar		
Lubrication :	Not required, if used select a medium aniline point lubricant (between 80°C and 100°C)		
Filtration :	40 µ		
Temperature range :	-18°C to +50°C		
Orifice :	2 mm		
Flow (at 6 bar, ΔP=1bar) :	1.8 W : 110 NI/min (C _v 0.11) - 5.4 to 12.7 W : 130 NI/min (C _v 0.13)		
Leak rate :	50 cm ³ /min		
Coil :	Epoxy encapsulated - class A wires - 100% ED (specify mod 0449)		
Voltage range :	-15% to +10% of nominal voltage		
Protection :	IP 65		
Power :	- Inrush : 10.9 VA Holding : 7.7 VA = 1.8 to 12.7 W		
Response times :	24 V=5.4 W	Energize : 6 ms	De-energize : 2 ms
	50Hz/6 W	Energize : 3-8 ms	De-energize : 2-7 ms

Spare parts :
 • Solenoid operator (power ≥ 5.4 W) : 45A-000-DXXX-XXX, including mounting screws 35013.
 • Seal (between solenoid and valve body) : 16402. • Seal between base and valve : 16453. • Flow control : N-45018.

Options :
 • NPTF threads. • High flow up to 200 NI/min, according to wattage.

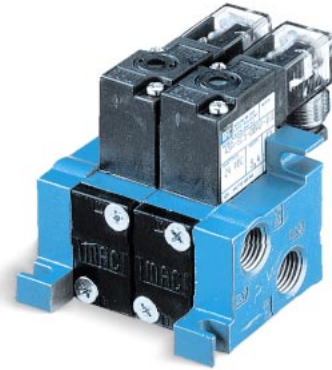
DIMENSIONS



Function	Port size	Flow (Max)	Manifold mounting
4/2	M5 - G1/8"	200 NI/min	stacking

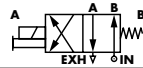

OPERATIONAL BENEFITS

1. Balanced poppet, immune to variations of pressure.
2. Short stroke with high flow.
3. The patented solenoid develops high shifting forces.
4. Powerful return spring.
5. Manual operator standard on all valves.
6. Burn-out proof solenoid on AC service.

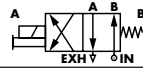



HOW TO ORDER

Reset

Port size	Single operator	Double operator (Minimum DC wattage 5,4W)
G1/8"	 45A-SC1-Dxxx-xxx	 45A-TC1-Dxxx-xxx
M5	45A-SD1-Dxxx-xxx	45A-TD1-Dxxx-xxx

WITH INTEGRATED FLOW REGULATORS

Port size	Single operator	Double operator
G1/8"	 45A-SC2-Dxxx-xxx	 45A-TC2-Dxxx-xxx
M5	45A-SD2-Dxxx-xxx	45A-TD2-Dxxx-xxx

SOLENOID OPERATOR >

D XX X- X XX*

XX	Voltage	X	Wire length	X	Manual operator	XX	Electrical connection
AB	220V~/50HZ	A	45 cm (Flying leads)	1	Non-locking	KA	Square connector
AA	110V~/50HZ	J	Connector	2	Locking	KD	Square connector with light
AC	24V~/50HZ					BA	Flying leads
FB	24V=/1,8W						
DA	24V=/5,4W						
DF	24V=/12,7W						

End plate kit (Port size G1/4") : M-45001-01P

TECHNICAL
DATA

Fluid :	Compressed air, vacuum, inert gases
Pressure range :	Vacuum to 8.5 bar
Lubrication :	Not required, if used select a medium aniline point lubricant (between 80°C and 100°C)
Filtration :	40 µ
Temperature range :	-18°C to +50°C
Orifice :	2 mm
Flow (at 6 bar, ΔP=1bar) :	1.8 W : 140 NI/min (C _v 0.14) - 5.4 to 12.7 W : 200 NI/min (C _v 0.2)
Leak rate :	50 cm ³ /min
Coil :	Epoxy encapsulated - class A wires - 100% ED (specify mod 0449)
Voltage range :	-15% to +10% of nominal voltage
Protection :	IP 65
Power :	~ Inrush : 10.9 VA Holding : 7.7 VA = 1.8 to 12.7 W
Response times :	24 V= / 5.4 W Energize : 6 ms De-energize : 2 ms 50Hz/6 W Energize : 3-8 ms De-energize : 2-7 ms

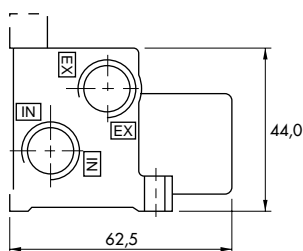
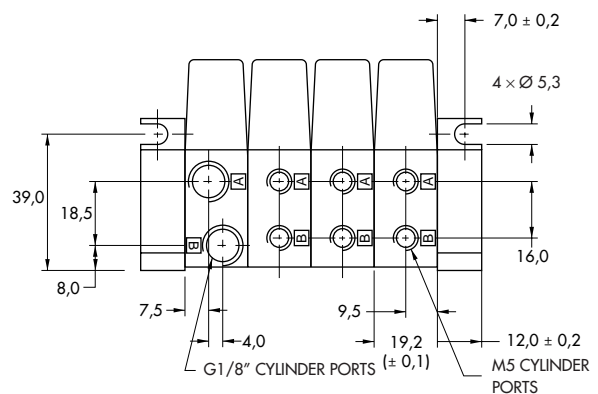
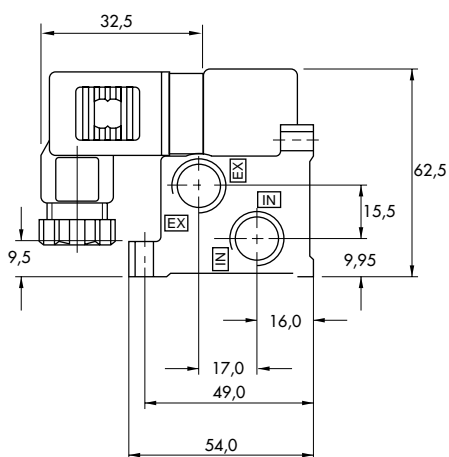
Spare parts :

- Solenoid operator (power ≥ 5.4 W) : 45A-000-DXXX-XXX, including mounting screws 35013.
- Seal (between solenoid and valve body) : 16402. • Seal between valves : 16422. • Tie-rod (x2) : 19813.
- Valve cover plate with flow controls : N-45004.

Options :

- NPTF threads. • High flow up to 300 NI/min, according to wattage. • Isolation of inlet and/or exhaust.

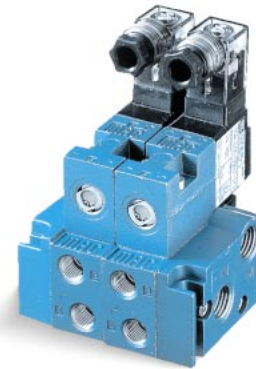
DIMENSIONS



Function	Port size	Flow (Max)	Manifold mounting
4/2	M5 - G1/8"	110 NI/min	sub-base

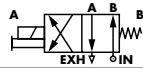

OPERATIONAL BENEFITS

1. Balanced poppet, immune to variations of pressure.
2. Short stroke with high flow.
3. The patented solenoid develops high shifting forces.
4. Powerful return spring.
5. Manual operator standard on all valves.
6. Burn-out proof solenoid on AC service.





HOW TO ORDER

Reset

Port size	Single operator	Double operator (Minimum DC wattage 5,4W)
		
Valve less base	45A-L00-Dxxx-xxx	45A-N00-Dxxx-xxx
G 1/8" base	45A-LCC-Dxxx-xxx	45A-NCC-Dxxx-xxx
M5 base	45A-LDC-Dxxx-xxx	45A-NDC-Dxxx-xxx

WITH INTEGRATED FLOW REGULATORS

Port size	Single operator	Double operator (Minimum DC wattage 5,4W)
		
Valve less base	45A-L00-Dxxx-xxx	45A-N00-Dxxx-xxx
G 1/8" base	45A-LCD-Dxxx-xxx	45A-NCD-Dxxx-xxx
M5 base	45A-LDD-Dxxx-xxx	45A-NDD-Dxxx-xxx

SOLENOID OPERATOR >

D **XX X- X XX***

XX	Voltage	X	Wire length	X	Manual operator	XX	Electrical connection
AB	220V~/50HZ	A	45 cm (Flying leads)	1	Non-locking	KA	Square connector
AA	110V~/50HZ	J	Connector	2	Locking	KD	Square connector with light
AC	24V~/50HZ					BA	Flying leads
FB	24V=/1,8W						
DA	24V=/5,4W						
DF	24V=/12,7W						

End plate kit (Port size G1/4") : M-45008-01P

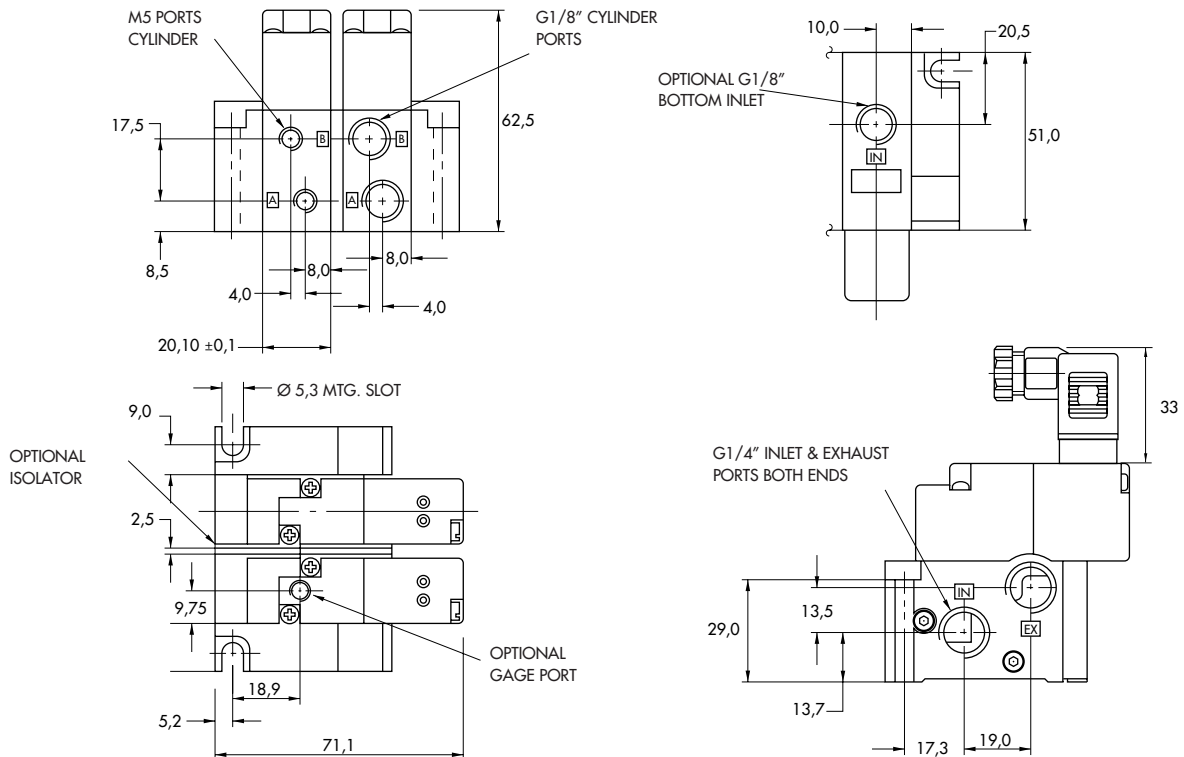
**TECHNICAL
DATA**

Fluid :	Compressed air, vacuum, inert gases		
Pressure range :	Vacuum to 8.5 bar		
Lubrication :	Not required, if used select a medium aniline point lubricant (between 80°C and 100°C)		
Filtration :	40 µ		
Temperature range :	-18°C to +50°C		
Orifice :	2 mm		
Flow (at 6 bar, ΔP=1bar) :	1.8 W : 90 NI/min (C _v 0.09) - 5.4 to 12.7 W : 110 NI/min (C _v 0.11)		
Leak rate :	50 cm ³ /min		
Coil :	Epoxy encapsulated - class A wires - 100% ED (specify mod 0449)		
Voltage range :	-15% to +10% of nominal voltage		
Protection :	IP 65		
Power :	- Inrush : 10.9 VA Holding : 7.7 VA = 1.8 to 12.7 W		
Response times :	24 V=5.4 W	Energize : 6 ms	De-energize : 2 ms
	50Hz/6 W	Energize : 3-8 ms	De-energize : 2-7 ms

Spare parts : • Solenoid operator (power ≥ 5.4 W) : 45A-000-DXXX-XXX, including mounting screws 35013.
 • Seal (between solenoid and valve body) : 16402. • Seal between base and valve : 16453. • Seal between bases : 16455.
 • Tie-rod (x2) : 19753. • Side cover plate with flow controls : N-45016.

Options : • NPTF threads. • High flow up to 180 NI/min, according to wattage. • Isolation of inlet and/or exhaust.

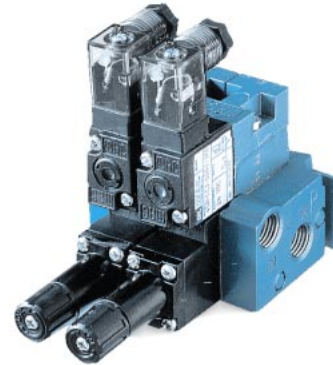
DIMENSIONS



Function	Port size	Flow (Max)	Manifold mounting
4/2	M5 - G1/8"	110 NI/min	sub-base with pressure regulators

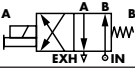

OPERATIONAL BENEFITS

1. Balanced poppet, immune to variations of pressure.
2. Short stroke with high flow.
3. The patented solenoid develops high shifting forces.
4. Powerful return spring.
5. Manual operator standard on all valves.
6. Burn-out proof solenoid on AC service.



HOW TO ORDER

Reset

Port size	Single operator	Double operator (Minimum DC wattage 5,4W)
		
Valve less base	45A-L00-Dxxx-xxx	45A-N00-Dxxx-xxx
G 1/8" base	45A-LCJ-Dxxx-xxx	45A-NCJ-Dxxx-xxx
M5 base	45A-LDJ-Dxxx-xxx	45A-NDJ-Dxxx-xxx

SOLENOID OPERATOR >

D **XX X- X XX'**

XX	Voltage	X	Wire length	X	Manual operator	XX	Electrical connection
AB	220V~/50HZ	A	45 cm (Flying leads)	1	Non-locking	KA	Square connector
AA	110V~/50HZ	J	Connector	2	Locking	KD	Square connector with light
AC	24V~/50HZ					BA	Flying leads
FB	24V=/1,8W						
DA	24V=/5,4W						
DF	24V=/12,7W						

End plate kit (Port size G1/4") : M-45008-01P.

click for gauge port : Single operator : replace L by M.

Double operator : replace N by P.

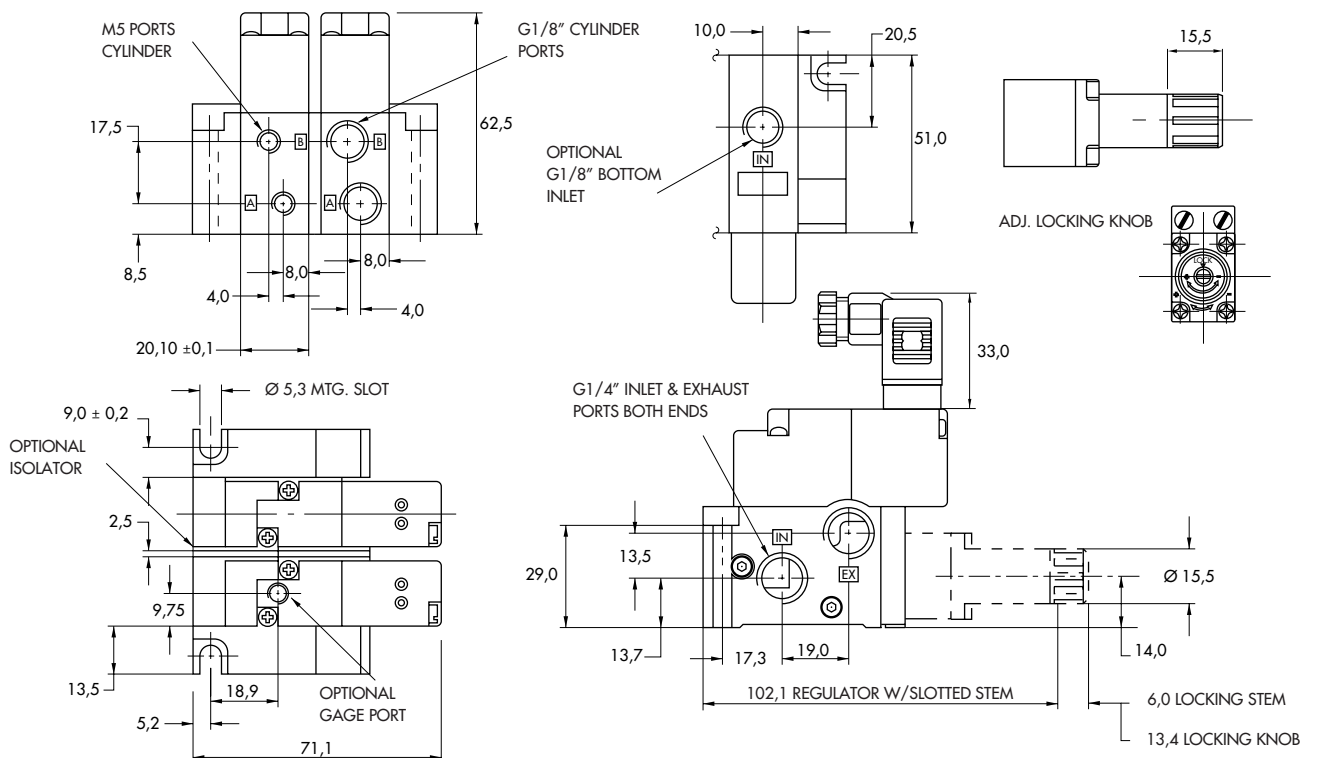
**TECHNICAL
DATA**

Fluid :	Compressed air, vacuum, inert gases
Pressure range :	Vacuum to 8.5 bar
Lubrication :	Not required, if used select a medium aniline point lubricant (between 80°C and 100°C)
Filtration :	40 µ
Temperature range :	-18°C to +50°C
Orifice :	2 mm
Flow (at 6 bar, ΔP=1bar) :	1.8 W : 90 NI/min (C _v 0.09) - 5.4 to 12.7 W : 110 NI/min (C _v 0.11)
Leak rate :	50 cm ³ /min
Coil :	Epoxy encapsulated - class A wires - 100% ED (specify mod 0449)
Voltage range :	-15% to +10% of nominal voltage
Protection :	IP 65
Power :	~ Inrush : 10.9 VA Holding : 7.7 VA = 1.8 to 12.7 W
Response times :	24 V=5.4 W Energize : 6 ms De-energize : 2 ms 50Hz/6 W Energize : 3-8 ms De-energize : 2-7 ms

Spare parts : • Solenoid operator (power ≥ 5.4 W) : 45A-000-DXXX-XXX, including mounting screws 35013.
 • Seal (between solenoid and valve body) : 16402. • Seal between base and valve : 16453. • Seal between bases : 16455.
 • Tie-rod (x2) : 19753. • Pressure regulator : 45A-00R.

Options : • NPTF threads. • High flow up to 180 NI/min, according to wattage. • Isolation of inlet and/or exhaust.

DIMENSIONS



Function	Port size	Flow (Max)	Manifold mounting
4/2	M5 - G1/8"	110 NI/min	sub-base with pressure and flow regulators


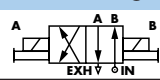
OPERATIONAL BENEFITS

1. Balanced poppet, immune to variations of pressure.
2. Short stroke with high flow.
3. The patented solenoid develops high shifting forces.
4. Powerful return spring.
5. Manual operator standard on all valves.
6. Burn-out proof solenoid on AC service.



HOW TO ORDER

Reset

Port size	Single operator	Double operator (Minimum DC wattage 5,4W)
		
Valve less base	45A-L00-Dxxx-xxx	45A-N00-Dxxx-xxx
G 1/8" base	45A-LCK-Dxxx-xxx	45A-NCK-Dxxx-xxx
M5 base	45A-LDK-Dxxx-xxx	45A-NDK-Dxxx-xxx

SOLENOID OPERATOR >

D **XX X- X XX'**

XX	Voltage	XX	Wire length	X	Manual operator	XX	Electrical connection
AB	220V~/50HZ	A	45 cm (Flying leads)	1	Non-locking	KA	Square connector
AA	110V~/50HZ	J	Connector	2	Locking	KD	Square connector with light
AC	24V~/50HZ					BA	Flying leads
FB	24V=/1,8W						
DA	24V=/5,4W						
DF	24V=/12,7W						

End plate kit (Port size G1/4") : M-45008-01P.

click for gauge port : Single operator : replace L by M
 Double operator : replace N by P.

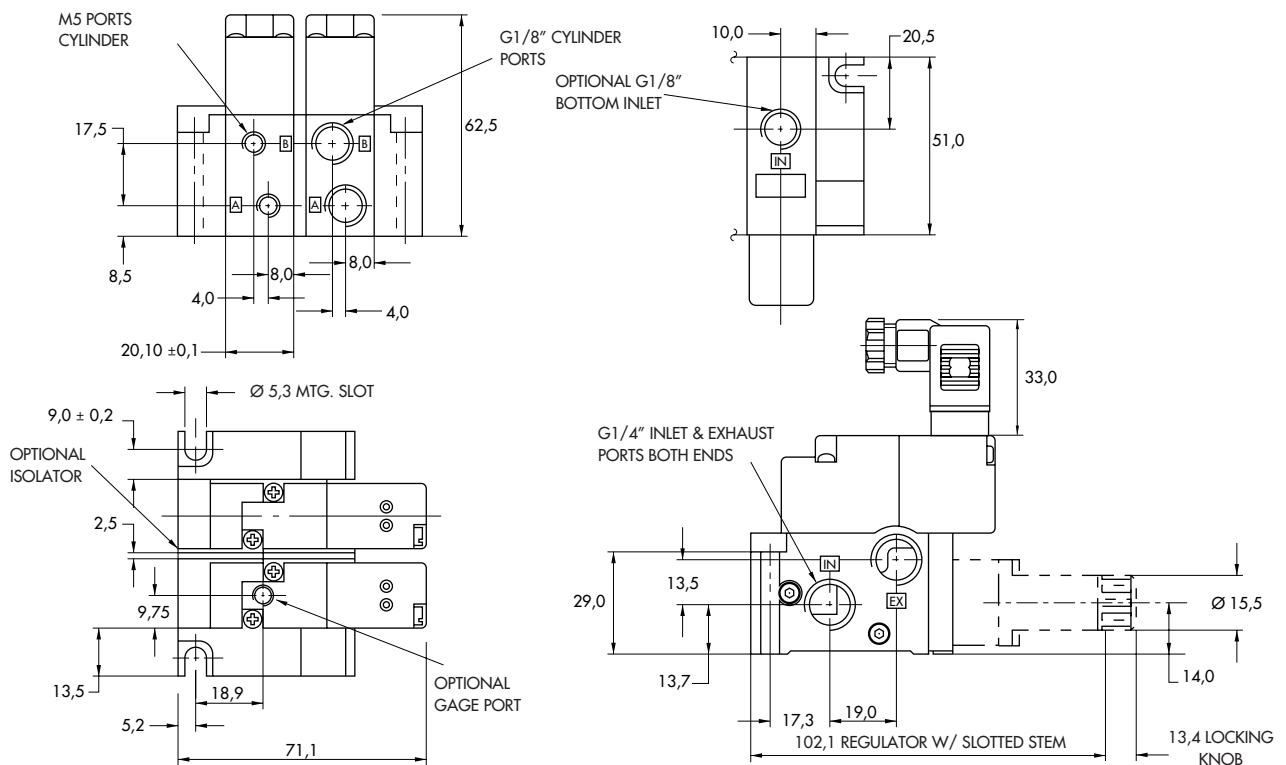
TECHNICAL DATA

Fluid :	Compressed air, vacuum, inert gases		
Pressure range :	Vacuum to 8.5 bar		
Lubrication :	Not required, if used select a medium aniline point lubricant (between 80°C and 100°C)		
Filtration :	40 µ		
Temperature range :	-18°C to +50°C		
Orifice :	2 mm		
Flow (at 6 bar, ΔP=1bar) :	1.8 W : 90 NI/min (C _v 0.09) - 5.4 to 12.7 W : 110 NI/min (C _v 0.11)		
Leak rate :	50 cm ³ /min		
Coil :	Epoxy encapsulated - class A wires - 100% ED (specify mod 0449)		
Voltage range :	-15% to +10% of nominal voltage		
Protection :	IP 65		
Power :	- Inrush : 10.9 VA Holding : 7.7 VA = 1.8 to 12.7 W		
Response times :	24 V=5.4 W	Energize : 6 ms	De-energize : 2 ms
	50Hz/6 W	Energize : 3-8 ms	De-energize : 2-7 ms

Spare parts :
 • Solenoid operator (power ≥ 5.4 W) : 45A-000-DXXX-XXX, including mounting screws 35013.
 • Seal (between solenoid and valve body) : 16402. • Seal between base and valve : 16453. • Seal between bases : 16455.
 • Tie-rod (x2) : 19753. • Pressure regulator : 45A-00R. • Side cover plate with flow controls : N-45016.

Options :
 • NPTF threads. • High flow up to 180 NI/min, according to wattage. • Isolation of inlet and/or exhaust.

DIMENSIONS



Function	Port size	Flow (Max)	Circuit bar mounting
4/2	M5 - G1/8"	100 NI/min	cylinder ports in base

OPERATIONAL BENEFITS

1. Balanced poppet, immune to variations of pressure.
2. Short stroke with high flow.
3. The patented solenoid develops high shifting forces.
4. Powerful return spring.
5. Manual operator standard on all valves.
6. Burn-out proof solenoid on AC service.



Reset

HOW TO ORDER

HOW TO ORDER VALVE FOR CIRCUIT BAR MOUNTING

Single operator	Double operator (Minimum DC wattage 5,4W)
 <p>45A-L00-Dxxx-xxx</p>	 <p>45A-N00-Dxxx-xxx</p>

SOLENOID OPERATOR >

D **XX X- X XX'**

XX Voltage	X Wire length	X Manual operator	XX Electrical connection
AB 220V~/50HZ	A 45 cm (Flying leads)	1 Non-locking	KA Square connector
AA 110V~/50HZ	J Connector	2 Locking	KD Square connector with light
AC 24V~/50HZ			BA Flying leads
FB 24V=/1,8W			
DA 24V=/5,4W			
DF 24V=/12,7W			

HOW TO ORDER CIRCUIT BAR**

Port size	Spacing mm	Side cylinder ports	Bottom cylinder ports
M5	21	EBM45A-001D-xx	EBM45A-002D-xx
G1/8"	21	EBM45A-001C-xx	EBM45A-002C-xx

HOW TO ORDER CIRCUIT BAR WITH FLOW REGULATORS **

Port size	Spacing mm	Side cylinder ports	Bottom cylinder ports
M5	26	EBM45A-015D-xx	EBM45A-016D-xx
G1/8"	26	EBM45A-015C-xx	EBM45A-016C-xx
M5	40	EBM45A-025D-xx	EBM45A-026D-xx
G1/8"	40	EBM45A-025C-xx	EBM45A-026C-xx

** Other options available. Consult factory.

Note : click for valves mounted on base at the factory (add - 9 to the model number).

Number of stations (03=3 stations)

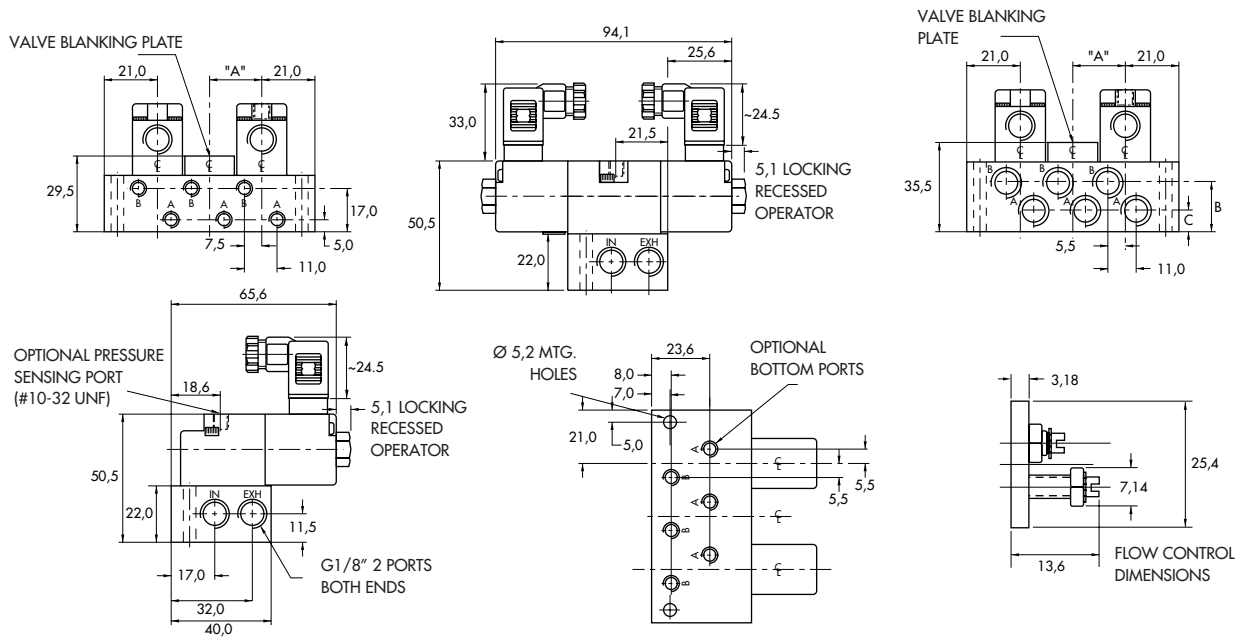
**TECHNICAL
DATA**

Fluid :	Compressed air, vacuum, inert gases
Pressure range :	Vacuum to 8.5 bar
Lubrication :	Not required, if used select a medium aniline point lubricant (between 80°C and 100°C)
Filtration :	40 µ
Temperature range :	-18°C to +50°C
Orifice :	2 mm
Flow (at 6 bar, ΔP=1bar) :	1.8 W : 80 NI/min (C _v 0.08) - 5.4 to 12.7 W : 100 NI/min (C _v 0.1)
Leak rate :	50 cm ³ /min
Coil :	Epoxy encapsulated - class A wires - 100% ED (specify mod 0449)
Voltage range :	-15% to +10% of nominal voltage
Protection :	IP 65
Power :	- Inrush : 10.9 VA Holding : 7.7 VA = 1.8 to 12.7 W
Response times :	24 V=5.4 W Energize : 6 ms De-energize : 2 ms 50Hz/6 W Energize : 3-8 ms De-energize : 2-7 m

Spare parts :
 • Solenoid operator (power ≥ 5.4 W) : 45A-000-DXXX-XXX, including mounting screws 35013.
 • Seal between solenoid and valve body : 16402. • Seal between base and valve : 16453.
 • Valve mounting screw (x2) : 35020. • Blanking plate : M-45010.

Options :
 • NPTF threads. • High flow up to 170 NI/min, according to wattage. • Isolation of inlet and/or exhaust.

DIMENSIONS



SPACING SIZE	A
STANDARD	21,0
PER JB	26,0

PORT SIZE	B	C
G1/8"	20,0	8,0
M5	22,0	6,0

Function	Port size	Flow (Max)	Circuit bar mounting
4/2	M5 - G1/8"	100 NI/min	with pressure regulators

OPERATIONAL BENEFITS

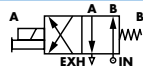
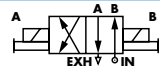
1. Balanced poppet, immune to variations of pressure.
2. Short stroke with high flow.
3. The patented solenoid develops high shifting forces.
4. Powerful return spring.
5. Manual operator standard on all valves.
6. Burn-out proof solenoid on AC service.



HOW TO ORDER

Reset

HOW TO ORDER VALVE FOR CIRCUIT BAR MOUNTING

	Single operator	Double operator (Minimum DC wattage 5,4W)
		
Valve w/o gauge port	45A-L00-Dxxx-xxx	45A-N00-Dxxx-xxx
Valve w/ gauge port	45A-M00-Dxxx-xxx	45A-P00-Dxxx-xxx

SOLENOID OPERATOR >

D **XX X- X XX'**

XX	Voltage	X	Wire length	X	Manual operator	XX	Electrical connection
AB	220V~/50HZ	A	45 cm (Flying leads)	1	Non-locking	KA	Square connector
AA	110V~/50HZ	J	Connector	2	Locking	KD	Square connector with light
AC	24V~/50HZ					BA	Flying leads
FB	24V=/1,8W						
DA	24V=/5,4W						
DF	24V=/12,7W						

HOW TO ORDER CIRCUIT BAR WITH PRESSURE REGULATORS (TO BE ORDERED SEPARATELY) **

Port size	Spacing mm	Side cylinder ports	Bottom cylinder ports
M5	26 (w/o gauge)	EBM45A-013D-xx	EBM45A-014D-xx
G1/8"	26 (w/o gauge)	EBM45A-013C-xx	EBM45A-014C-xx
M5	40 (w/ gauge)	EBM45A-023D-xx	EBM45A-024D-xx
G1/8"	40 (w/ gauge)	EBM45A-023C-xx	EBM45A-024C-xx

** Other options available. Consult factory.

Pressure regulator : 35A-00M.

Note : click for valves mounted on base at the factory (add - 9 to the model number).

Number of stations (03=3 stations)

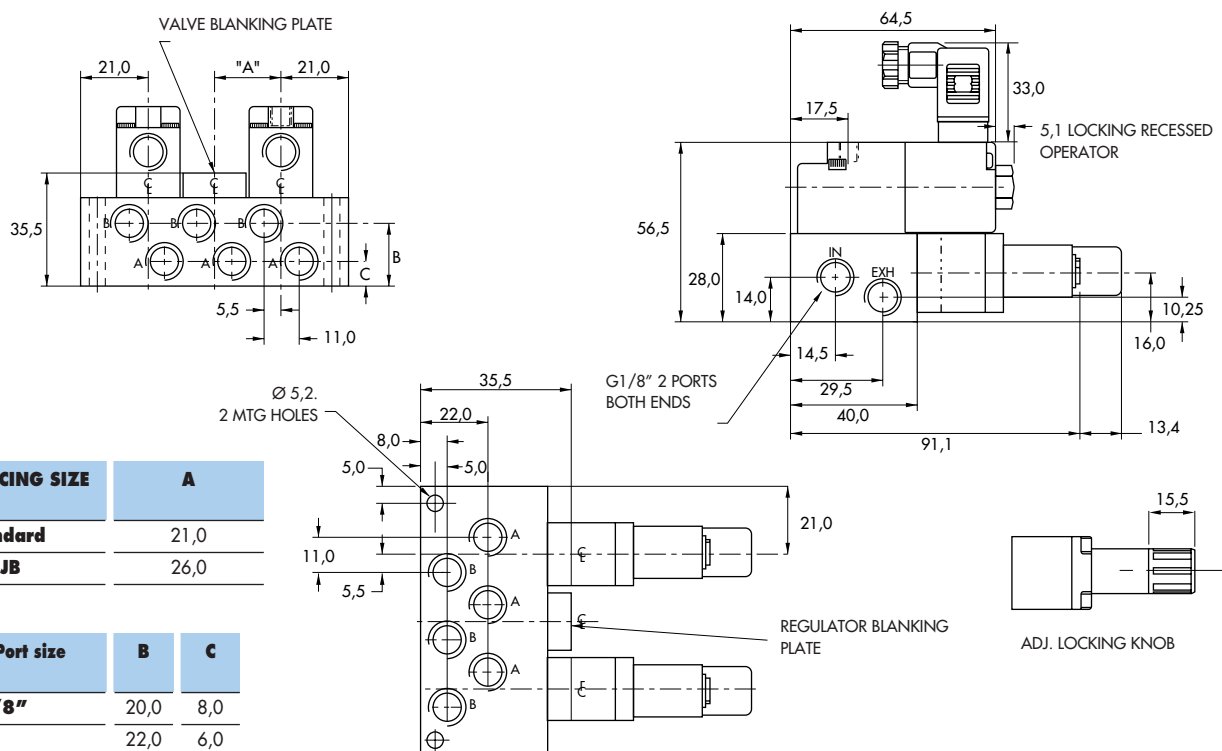
**TECHNICAL
DATA**

Fluid :	Compressed air, vacuum, inert gases
Pressure range :	Vacuum to 8.5 bar
Lubrication :	Not required, if used select a medium aniline point lubricant (between 80°C and 100°C)
Filtration :	40 µ
Temperature range :	-18°C to +50°C
Orifice :	2 mm
Flow (at 6 bar, ΔP=1bar) :	1.8 W : 80 NI/min (C _v 0.08) - 5.4 to 12.7 W : 100 NI/min (C _v 0.1)
Leak rate :	50 cm ³ /min
Coil :	Epoxy encapsulated - class A wires - 100% ED (specify mod 0449)
Voltage range :	-15% to +10% of nominal voltage
Protection :	IP 65
Power :	- Inrush : 10.9 VA Holding : 7.7 VA = 1.8 to 12.7 W
Response times :	24 V=5.4 W Energize : 6 ms De-energize : 2 ms 50Hz/6 W Energize : 3-8 ms De-energize : 2-7 ms

Spare parts : • Solenoid operator (power ≥ 5.4 W) : 45A-000-DXXX-XXX, including mounting screws 35013.
 • Seal between solenoid and valve body : 16402. • Seal between base and valve : 16453. • Valve mounting screw (x2) : 35020.
 • Blanking plate valve : M-45010. • Blanking plate regulator : M-35005.

Options : • NPTF threads. • High flow up to 170 NI/min, according to wattage. • Isolation of inlet and/or exhaust.

DIMENSIONS



SPACING SIZE	A
Standard	21,0
Per JB	26,0

Port size	B	C
G1/8"	20,0	8,0
M5	22,0	6,0

Function	Port size	Flow (Max)	Circuit bar mounting
4/2	M5 - G1/8"	100 NI/min	"plug-in"

OPERATIONAL BENEFITS

1. Balanced poppet, immune to variations of pressure.
2. Short stroke with high flow.
3. The patented solenoid develops high shifting forces.
4. Powerful return spring.
5. Manual operator standard on all valves.
6. Burn-out proof solenoid on AC service.



HOW TO ORDER

Reset

HOW TO ORDER VALVE FOR CIRCUIT BAR MOUNTING "PLUG-IN"

Single operator	Double operator (Minimum DC wattage 5,4W)
 45A-L00-DxxJ-xFM	 45A-N00-DxxJ-xFM

SOLENOID OPERATOR ▶

D **XX** J- **X** FM *

XX Voltage	X Manual operator
AB 220V~/50Hz	1 Non-locking
AA 110V~/50Hz	2 Locking
AC 24V~/50Hz	
FB 24V=/1,8W	
DA 24V=/5,4W	
DF 24V=/12,7W	

HOW TO ORDER "PLUG-IN" CIRCUIT BAR**

Port size	Spacing mm	Side cylinder ports	Bottom cylinder ports
M5	21	ECD45A-001D-A0-xx	ECD45A-002D-A0-xx
G1/8"	21	ECD45A-001C-A0-xx	ECD45A-002C-A0-xx

** without light (A0)
with light 220V~/50Hz (AB)
with light 24V= (AD)

Number of stations (03=3 stations)

Other options available. Consult factory.

Note : for valves mounted on base at the factory (add - 9 to the model number).

OPTIONS

ECD45A-002D-A0-xx

click for double operator valve (replace by 8). (Bottom cylinder ports)

**TECHNICAL
DATA**

Fluid :	Compressed air, vacuum, inert gases		
Pressure range :	Vacuum to 8.5 bar		
Lubrication :	Not required, if used select a medium aniline point lubricant (between 80°C and 100°C)		
Filtration :	40 µ		
Temperature range :	-18°C to +50°C		
Orifice :	2 mm		
Flow (at 6 bar, ΔP=1bar) :	1.8 W : 80 NI/min (C _v 0.08) - 5.4 to 12.7 W : 100 NI/min (C _v 0.1)		
Leak rate :	50 cm ³ /min		
Coil :	Epoxy encapsulated - class A wires - 100 % ED (specify mod 0449)		
Voltage range :	-15% to +10% of nominal voltage		
Protection :	IP 65		
Power :	- Inrush : 10.9 VA Holding : 7.7 VA = 1.8 to 12.7 W		
Response times :	24 V=5.4 W	Energize : 6 ms	De-energize : 2 ms
	50Hz/6 W	Energize : 3-8 ms	De-energize : 2-7 ms

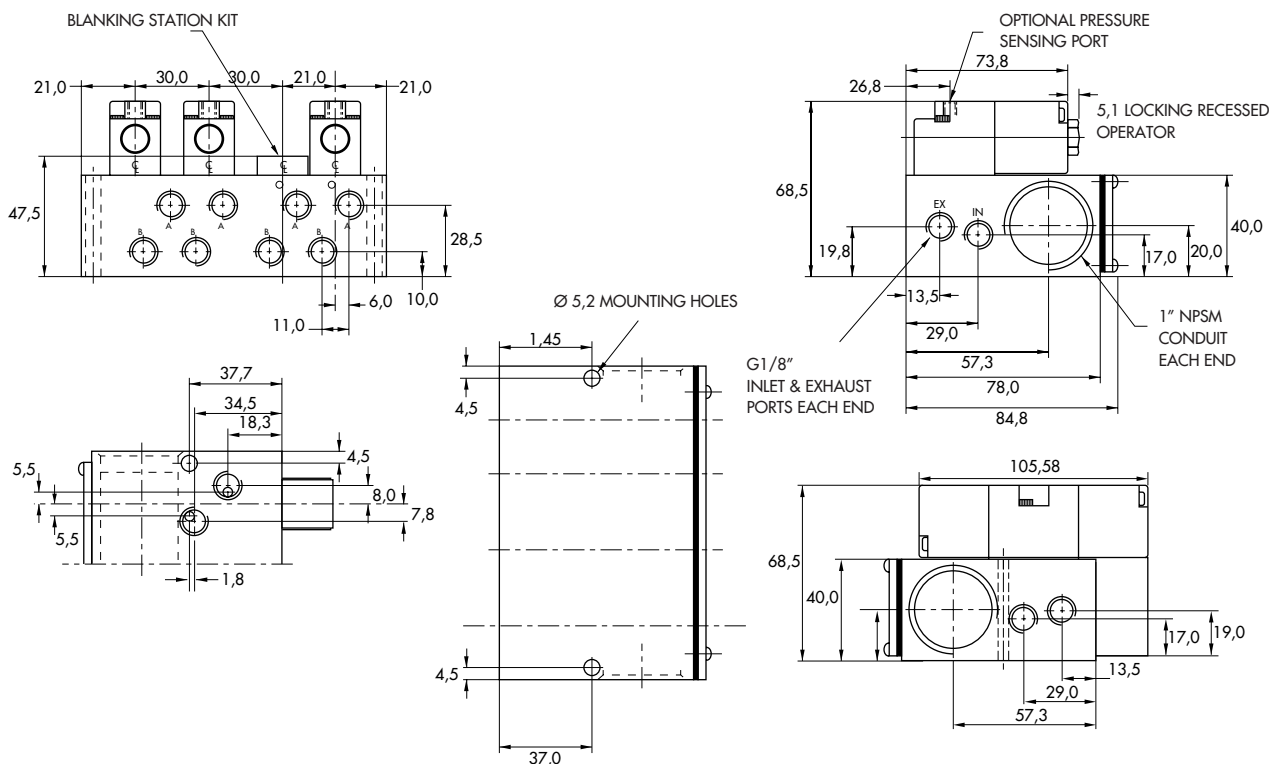
Spare parts :

- Solenoid operator (power ≥ 5.4 W) : 45A-000-DXXJ-XFM, including mounting screws 35013.
- Seal (between solenoid and valve body) : 16402. • Seal between base and valve : 16453.
- Valve mounting screw (x2) : 35020. • Blanking plate valve : E101.

Options :

- NPTF threads. • High flow up to 170 NI/min, according to wattage. • Isolation of inlet and/or exhaust.

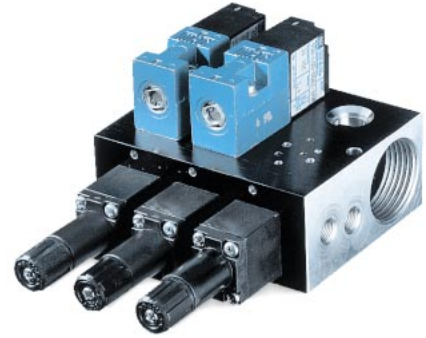
DIMENSIONS



Function	Port size	Flow (Max)	Circuit bar mounting
4/2	M5 - G1/8"	100 NI/min	"plug-in" with pressure regulators

OPERATIONAL BENEFITS

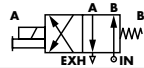
1. Balanced poppet, immune to variations of pressure.
2. Short stroke with high flow.
3. The patented solenoid develops high shifting forces.
4. Powerful return spring.
5. Manual operator standard on all valves.
6. Burn-out proof solenoid on AC service.



HOW TO ORDER

Reset

HOW TO ORDER VALVE FOR "PLUG-IN" CIRCUIT BAR

Single operator	Double operator (Minimum DC wattage 5,4W)
 45A-L00-DxxJ-xFM	 45A-N00-DxxJ-xFM

SOLENOID OPERATOR ►

D **XX** J- **X** FM*

XX Voltage	X Manual operator
AB 220V~/50Hz	1 Non-locking
AA 110V~/50Hz	2 Locking
AC 24V~/50Hz	
FB 24V=/1,8W	
DA 24V=/5,4W	
DF 24V=/12,7W	

HOW TO ORDER CIRCUIT BAR WITH PRESSURE REGULATORS (TO BE ORDERED SEPARATELY) **

Port size	Spacing mm	Bottom cylinder ports
M5	21	ECD45A-004D-A0-xx
G1/8"	21	ECD45A-004C-A0-xx
M5	26	ECD45A-014D-A0-xx
G1/8"	26	ECD45A-014C-A0-xx
M5	40	ECD45A-024D-A0-xx
G1/8"	40	ECD45A-024C-A0-xx

** without light (A0)
with light 220V~/50Hz (AB)
with light 24V= (AD)

Number of stations (03=3 stations)

Other options available. Consult factory.
Pressure regulator : 35A-00M

Note : click for valves mounted on base at the factory (add - 9 to the model number).

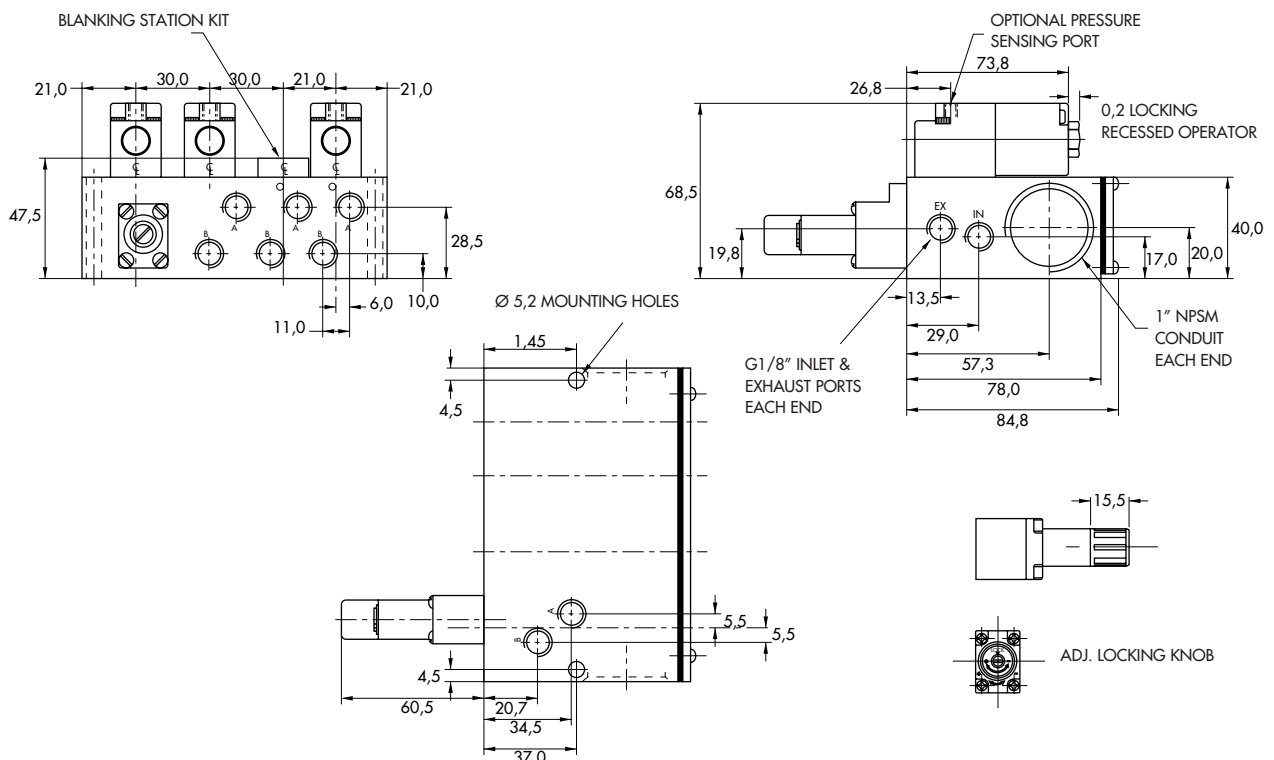
**TECHNICAL
DATA**

Fluid :	Compressed air, vacuum, inert gases
Pressure range :	Vacuum to 8.5 bar
Lubrication :	Not required, if used select a medium aniline point lubricant (between 80°C and 100°C)
Filtration :	40 µ
Temperature range :	-18°C to +50°C
Orifice :	2 mm
Flow (at 6 bar, ΔP=1bar) :	1.8 W : 80 NI/min (C _v 0.08) - 5.4 to 12.7 W : 100 NI/min (C _v 0.1)
Leak rate :	50 cm ³ /min
Coil :	Epoxy encapsulated - class A wires - 100% ED (specify mod 0449)
Voltage range :	-15% to +10% of nominal voltage
Protection :	IP 65
Power :	- Inrush : 10.9 VA Holding : 7.7 VA = 1.8 to 12.7 W
Response times :	24 V=5.4 W Energize : 6 ms De-energize : 2 ms 50Hz/6 W Energize : 3-8 ms De-energize : 2-7 ms

- Spare parts :
- Solenoid operator (power ≥ 5.4 W) : 45A-000-DXXJ-XFM, including mounting screws 35013.
 - Seal (between solenoid and valve body) : 16402. • Seal between base and valve : 16453.
 - Valve mounting screw (x2) : 35020. • Blanking plate valve : E101. • Blanking plate regulator : M-35005.

- Options :
- NPTF threads. • High flow up to 170 NI/min, according to wattage. • Isolation of inlet and/or exhaust.

DIMENSIONS



Function	Port size	Flow (Max)	Circuit bar mounting
4/2	M5 - G1/8"	100 NI/min	"plug-in" with flow regulators

OPERATIONAL BENEFITS

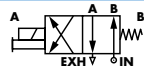
1. Balanced poppet, immune to variations of pressure.
2. Short stroke with high flow.
3. The patented solenoid develops high shifting forces.
4. Powerful return spring.
5. Manual operator standard on all valves.
6. Burn-out proof solenoid on AC service.



HOW TO ORDER

Reset

HOW TO ORDER VALVE FOR CIRCUIT BAR MOUNTING "PLUG-IN"

Single operator	Double operator (Minimum DC wattage 5,4W)
 <p>45A-L00-Dxxx-xFM</p>	 <p>45A-N00-Dxxx-xFM</p>

SOLENOID OPERATOR ▶

D **XX** J- **X** FM*

XX Voltage	X Manual operator
AB 220V~/50Hz	1 Non-locking
AA 110V~/50Hz	2 Locking
AC 24V~/50Hz	
FB 24V=/1,8W	
DA 24V=/5,4W	
DF 24V=/12,7W	

HOW TO ORDER
"PLUG-IN" CIRCUIT BAR
WITH FLOW REGULATORS **

Port size	Spacing mm	Side cylinder ports	Bottom cylinder ports
M5	26	-----	ECD45A-016D-A0-xx
G1/8"	26	-----	ECD45A-016C-A0-xx
M5	40	-----	ECD45A-026D-A0-xx
G1/8"	40	-----	ECD45A-026C-A0-xx
M5	30	ECD45A-035D-A0-xx	-----
G1/8"	30	ECD45A-035C-A0-xx	-----

** without light (A0)
with light 220V~/50Hz (AB)
with light 24V= (AD)

Other options available. Consult factory.

Number of stations (03=3 stations)

Note : click for valves mounted on base at the factory (add - 9 to the model number).

**TECHNICAL
DATA**

Fluid :	Compressed air, vacuum, inert gases
Pressure range :	Vacuum to 8.5 bar
Lubrication :	Not required, if used select a medium aniline point lubricant (between 80°C and 100°C)
Filtration :	40 µ
Temperature range :	-18°C to +50°C
Orifice :	2 mm
Flow (at 6 bar, ΔP=1bar) :	1.8 W : 80 NI/min (C _v 0.08) - 5.4 to 12.7 W : 100 NI/min (C _v 0.1)
Leak rate :	50 cm ³ /min
Coil :	Epoxy encapsulated - class A wires - 100% ED (specify mod 0449)
Voltage range :	-15% to +10% of nominal voltage
Protection :	IP 65
Power :	- Inrush : 10.9 VA Holding : 7.7 VA = 1.8 to 12.7 W
Response times :	24 V=5.4 W Energize : 6 ms De-energize : 2 ms 50Hz/6 W Energize : 3-8 ms De-energize : 2-7 ms

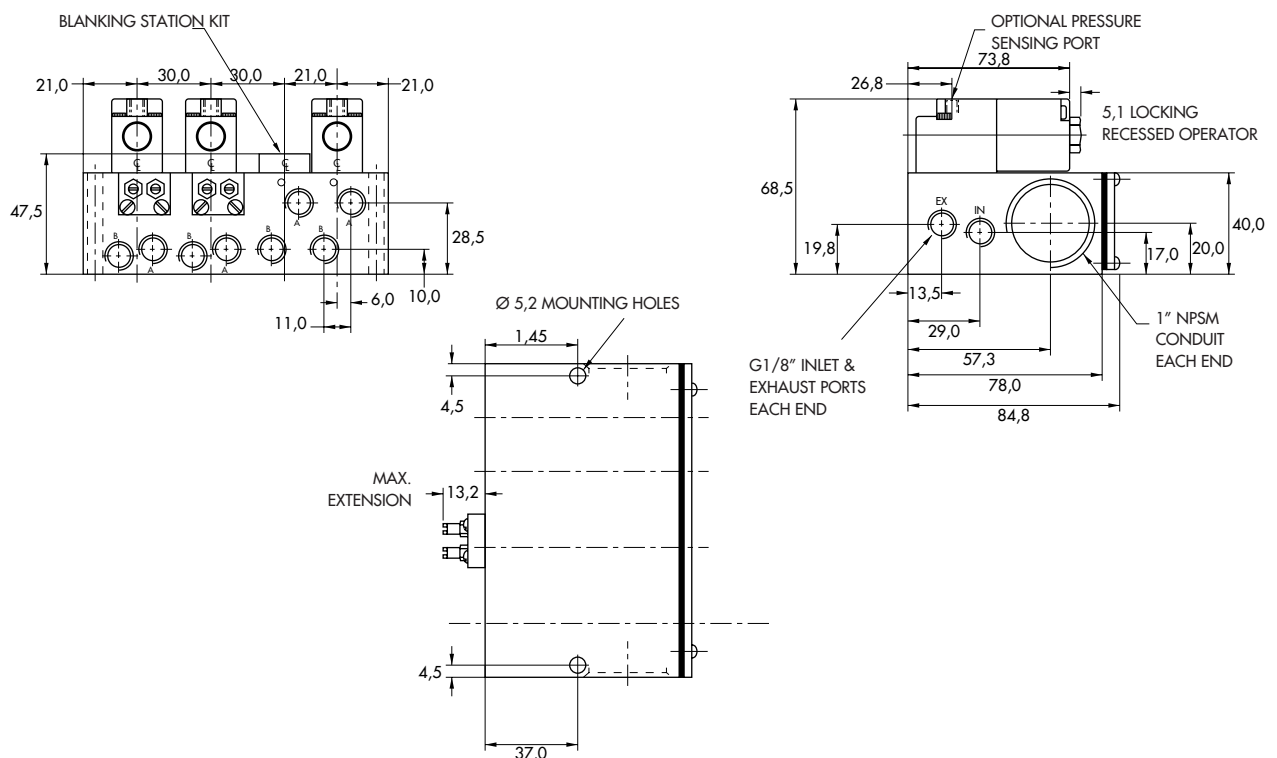
Spare parts :

- Solenoid operator (power ≥ 5.4 W) : 45A-000-DXXJ-XFM, including mounting screws 35013.
- Seal (between solenoid and valve body) : 16402. • Seal between base and valve : 16453.
- Valve mounting screw (x2) : 35020. • Blanking plate valve : E101. • Flow control : N-45025.

Options :

- NPTF threads. • High flow up to 170 NI/min, according to wattage. • Isolation of inlet and/or exhaust.

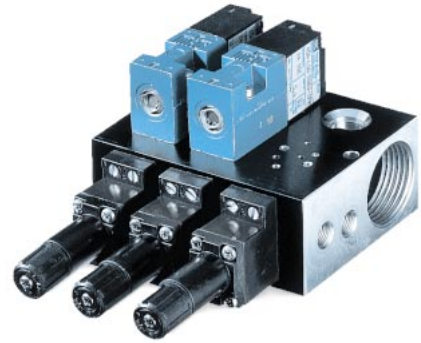
DIMENSIONS



Function	Port size	Flow (Max)	Circuit bar mounting
4/2	M5 - G1/8"	100 NI/min	"plug-in" with pressure and flow regulators

OPERATIONAL BENEFITS


1. Balanced poppet, immune to variations of pressure.
2. Short stroke with high flow.
3. The patented solenoid develops high shifting forces.
4. Powerful return spring.
5. Manual operator standard on all valves.
6. Burn-out proof solenoid on AC service.



HOW TO ORDER

Reset

HOW TO ORDER VALVE FOR CIRCUIT BAR MOUNTING "PLUG-IN"

Single operator	Double operator (Minimum DC wattage 5,4W)
 <p>45A-L00-Dxxx-xFM</p>	 <p>45A-N00-Dxxx-xFM</p>

SOLENOID OPERATOR ▶

D **XX** J- **X** FM*

XX Voltage	X Manual operator
AB 220V~/50Hz	1 Non-locking
AA 110V~/50Hz	2 Locking
AC 24V~/50Hz	
FB 24V=/1,8W	
DA 24V=/5,4W	
DF 24V=/12,7W	

HOW TO ORDER "PLUG-IN" CIRCUIT BAR WITH PRESSURE AND FLOW REGULATORS (TO BE ORDERED SEPARATELY)**

Port size	Spacing mm	Bottom cylinder ports
M5	21	ECD45A-007D-A0-xx
G1/8"	21	ECD45A-007C-A0-xx
M5	26	ECD45A-017D-A0-xx
G1/8"	26	ECD45A-017C-A0-xx
M5	40	ECD45A-027D-A0-xx
G1/8"	40	ECD45A-027C-A0-xx

** without light (A0)
with light 220V~/50Hz (AB)
with light 24V= (AD)

Number of stations (03=3 stations)

Other options available. Consult factory.

Pressure and flow regulator : 45A-002

Note : click for valves mounted on base at the factory (add - 9 to the model number).

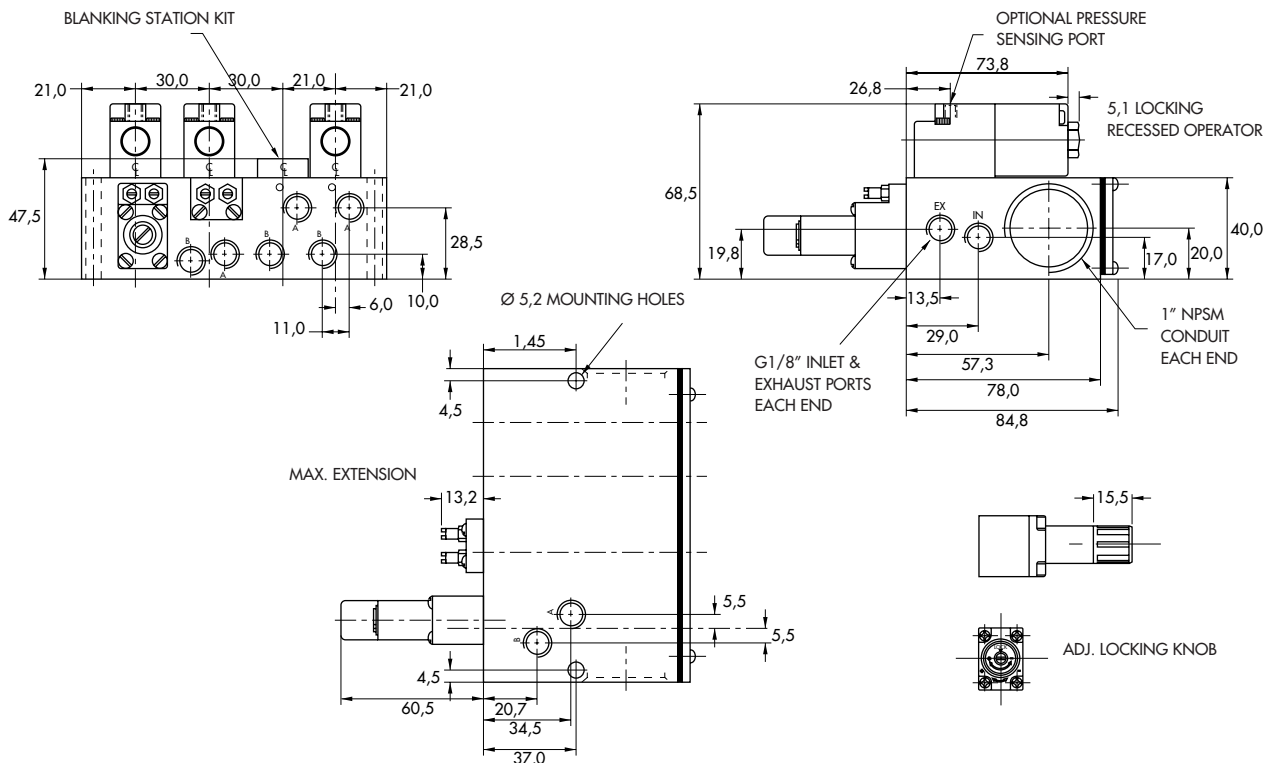
**TECHNICAL
DATA**

Fluid :	Compressed air, vacuum, inert gases
Pressure range :	Vacuum to 8.5 bar
Lubrication :	Not required, if used select a medium aniline point lubricant (between 80°C and 100°C)
Filtration :	40 µ
Temperature range :	-18°C to +50°C
Orifice :	2 mm
Flow (at 6 bar, ΔP=1bar) :	1.8 W : 80 NI/min (C _v 0.08) - 5.4 to 12.7 W : 100 NI/min (C _v 0.1)
Leak rate :	50 cm ³ /min
Coil :	Epoxy encapsulated - class A wires - 100% ED (specify mod 0449)
Voltage range :	-15% to +10% of nominal voltage
Protection :	IP 65
Power :	- Inrush : 10.9 VA Holding : 7.7 VA = 1.8 to 12.7 W
Response times :	24 V=5.4 W Energize : 6 ms De-energize : 2 ms 50Hz/6 W Energize : 3-8 ms De-energize : 2-7 ms

- Spare parts :
- Solenoid operator (power ≥ 5.4 W) : 45A-000-DXXJ-XFM, including mounting screws 35013.
 - Seal between solenoid and valve body : 16402. • Seal between base and valve : 16453.
 - Valve mounting screw (x2) : 35020. • Blanking plate valve : E101. • Blanking plate regulator : M-35005.

- Options :
- NPTF threads. • High flow up to 170 NI/min, according to wattage. • Isolation of inlet and/or exhaust.

DIMENSIONS



Codification table for voltages / Wire length / Manual operators / Electrical connections

VALVE CODE >

-DXX X - X XX
1 2 3 4

OPTIONS AVAILABLE FOR

- Solenoid valves 35 & 45 Series

- Pilot operated valves with pilots type 35 Series
Series : 82

1. VOLTAGE

- D XX X - X XX	VOLTAGE
AA	120 V~/60 Hz - 110 V/50 Hz
AB	240 V~/60 Hz - 220 V/50 Hz
AC	24 V~/60 Hz - 24 V/50 Hz
AD	24 V~/60 Hz
AE	200 V~/60 Hz
AF	240 V~/50 Hz
AG	240 V~/50 Hz
DA	24 V=/5,4 W
DB	12 V=/5,4 W
DC	12 V=/7,5 W
DD	24 V=/7,3 W
DE	12 V=/12,7 W CLSF
DF	24 V=/12,7 W CLSF
DK	110 V=/4,7 W
DL	64 V=/6 W
DM	36 V=/5,3 W
DN	6 V=/6 W
DP	48 V=/5,8 W
DU	24 V=/6 W
EA	12 V=/6 W
FA	12 V=/1,8 W
FB	24 V=/1,8 W
FE	12 V=/2,4 W
FF	24 V=/2,4 W

2. WIRE LENGTH

- D XX X - X XX	WIRE LENGTH
A	45 cm - 18"
B	60 cm - 24"
C	90 cm - 36"
D	120 cm - 48"
E	180 cm - 72"
F	240 cm - 96"
J	For external plug-in connector
P	For plug-in valves (82 Series only)

3. MANUAL OPERATOR

- D XX X - X XX MANUAL OPERATOR

0	No operator
1	Non-locking recessed
2	Locking recessed
3	Non-locking extended
4	Locking extended

4. ELECTRICAL CONNECTION

- D XX X - X XX ELECTRICAL CONNECTION

BA	Flying leads
BK	BA with protection diode
BL	BA with protection varistor
CA	1/2" NPS conduit
JB	Rectangular connector
JD	Rectangular connector with light
JM	Rectangular connector, male only
KA	Square connector
KB	Square connector with protection diode
KC	Square connector with protection varistor
KD	Square connector with light
KE	Square connector with light and protection diode
KF	Square connector with light and protection varistor
KJ	Square connector (male only)
KK	Square connector with protection diode (male only)
KL	Square connector with protection varistor (male only)
MA	Electrical common conduit
TA	Dual tabs
TB	TA with protection diode
TD	TA with light
TE	TA with light and protection diode
TJ	Dual tabs (male only)
TK	TJ with protection diode
TM	TJ with light
TN	TJ with light and protection diode
DA*	Plug-in connector
DK*	DA with protection diode
DL*	DA with protection varistor

* To be used with 82 Series only